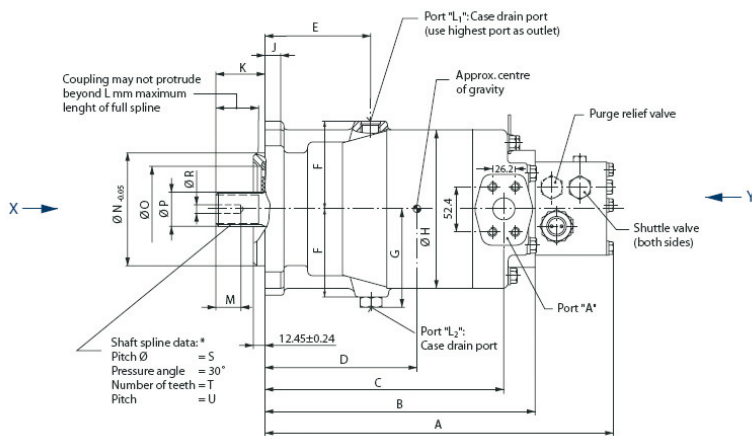


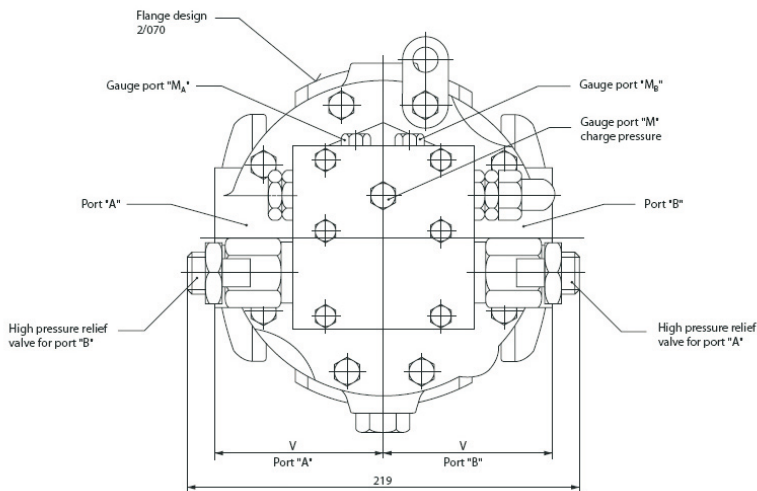
DRAWINGS

FRAME SIZE 22 AND 23

View Z



View Y



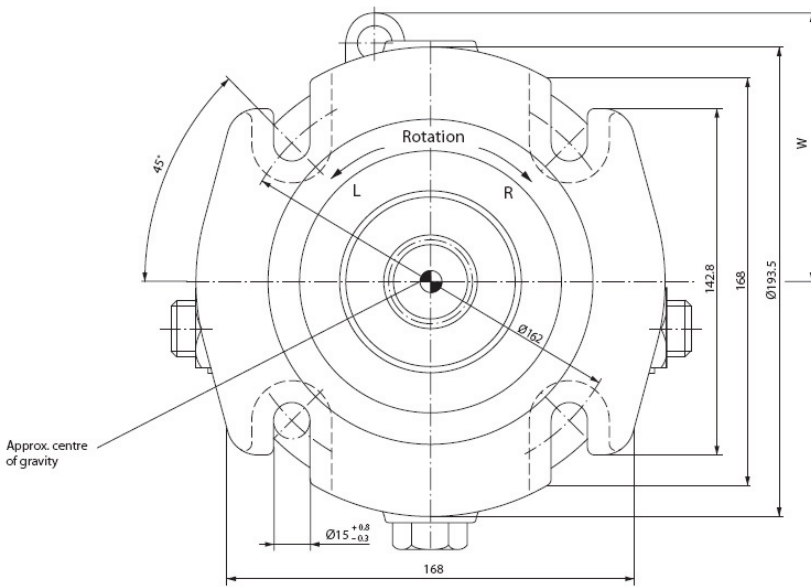
* Shaft spline data: spline shaft with involute spline, according to SAE handbook, 1963, class 1, fillet root side fit.

Frame size	Port A and B	Port L1 and L2	Port MA and MB	Port M
22	SAE flange, size 1 SAE split flange boss 5000 psi 4 threads	7/8-14 UNF-2B SAE straight thread O-ring boss	7/16-20 UNF-2B SAE straight thread O-ring boss	
23	3/8-16 UNC-2B 18 deep			

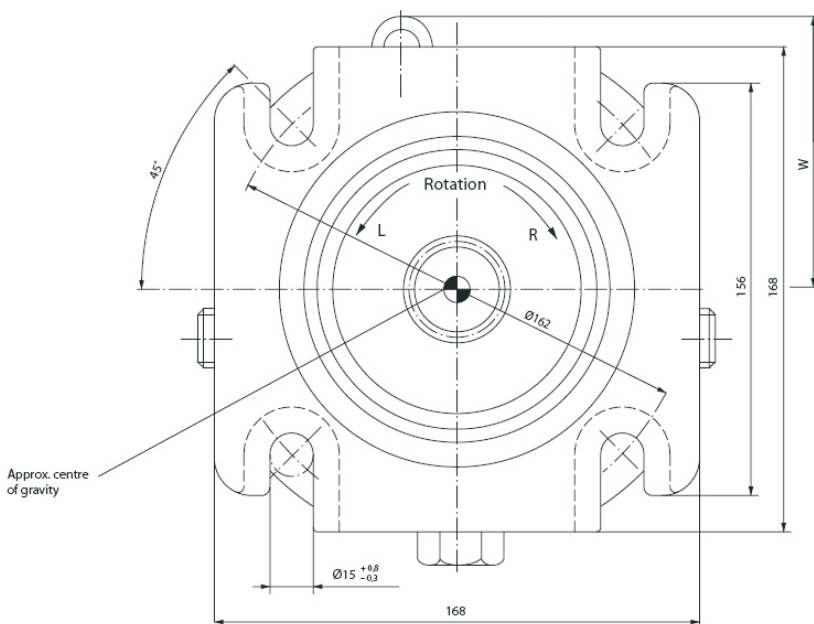
DRAWINGS

FRAME SIZE 22 AND 23

View X (frame size 22)



View X (frame size 23)



DRAWINGS

FRAME SIZE 22 AND 23

Dimensions:

Frame size	A mm [in]	B mm [in]	C mm [in]	D mm [in]	E mm [in]	F mm [in]	G mm [in]	ØH mm [in]	J mm [in]	K mm [in]	L mm [in]	M mm [in]
22	378 [14.882]	290 [11.417]	255 [10.039]	165 [6.496]	108 [4.252]	86.5 [3.406]	98 [3.858]	161 [6.339]	16 [0.630]	56 [2.205]	48 [1.890]	28.4 [1.118]
Frame size	ØN mm [in]	ØO mm [in]	ØP mm [in]	ØR mm [in]	ØS mm [in]	T mm [in]	U mm [in]	V mm [in]	W mm [in]	diameter for shaft coupling mm [in]	Weight kg [lb]	
22	127 [5.000]	84 [3.307]	34.50 ^{-0.17} [1.358 -0.0067]	8.5 [0.335]	33.338 [1.313]	21 [0.827]	16/32	85.8 [3.378]	101 [3.976]	31.75 ^{+0.062} [1.250 +0.0024]	40 [88]	
23	127 [5.000]	98 [3.858]	37.68 ^{-0.17} [1.483 -0.0067]	8.5 [0.335]	36.513 [1.438]	23 [0.906]	16/32	95.2 [3.748]	114 [4.488]	34.95 ^{+0.062} [1.376 +0.0024]	47 [104]	

Information contained in this catalogue is accurate as of the publication date and is subject to change without notice. Performance values are typical values. Customers are responsible for selecting products for their applications using normal engineering methods.



SMIT
hydraulics